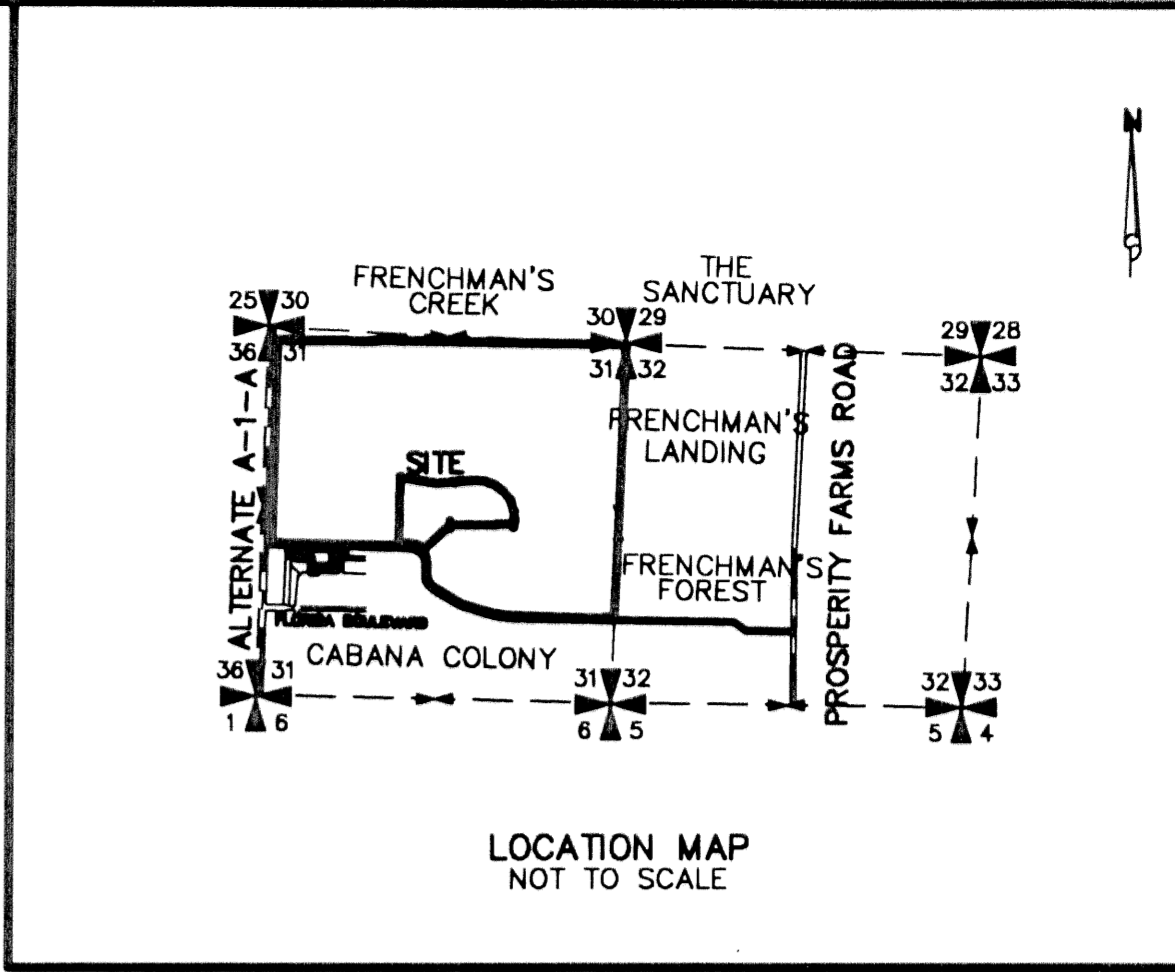
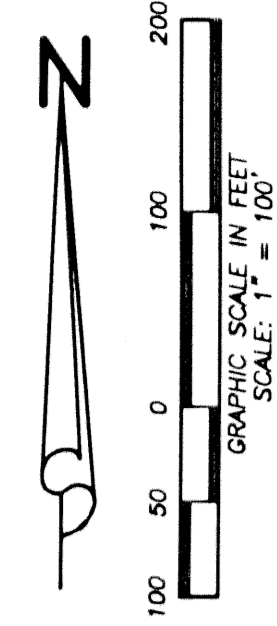


FRENCHMAN'S RESERVE PCD - CLUBHOUSE

BEING A REPLAT OF TRACT I AND A PORTION OF TRACT F OF FRENCHMAN'S RESERVE PCD - PLAT ONE AS RECORDED IN PLAT BOOK 92, PAGE 11-20 IN PALM BEACH COUNTY, FLORIDA

BEING A PARCEL OF LAND LYING IN SECTION 31, TOWNSHIP 41 SOUTH, RANGE 43 EAST, CITY OF PALM BEACH GARDENS, PALM BEACH COUNTY, FLORIDA.

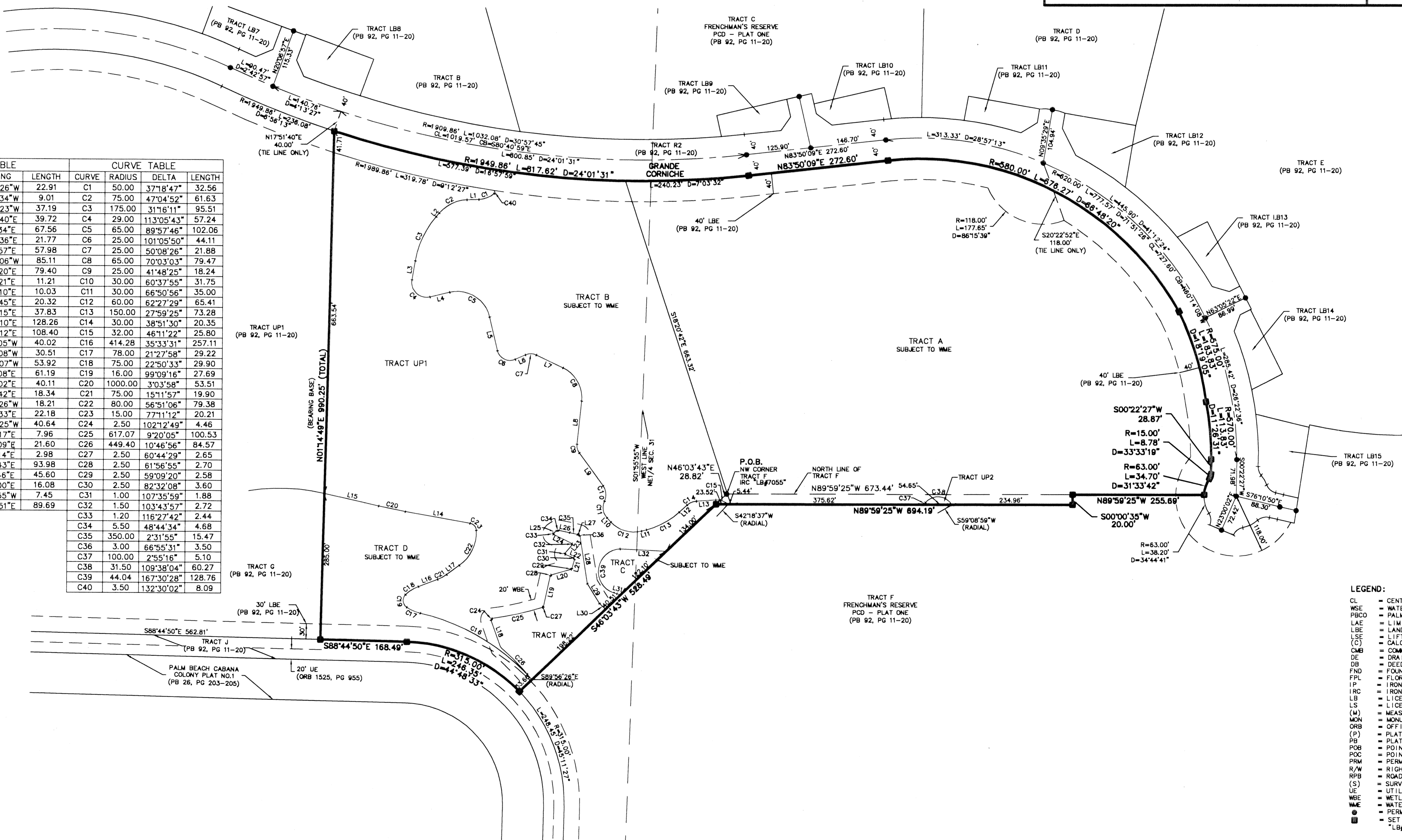
JANUARY, 2002 SHEET 2 OF 2



STATE OF FLORIDA
 COUNTY OF PALM BEACH
 THIS PLAT WAS FILED FOR RECORD AT _____ M. THIS _____ DAY OF _____ A.D. 2001 AND DULY RECORDED IN PLAT BOOK _____ ON PAGES _____ AND _____
 DOROTHY H. WILKEN
 CLERK CIRCUIT COURT

BY: _____
 DEPUTY CLERK

LINE TABLE			CURVE TABLE			
LINE	BEARING	LENGTH	CURVE	RADIUS	DELTA	LENGTH
L1	S88°07'26"W	22.91	C1	50.00	371°8'47"	32.56
L2	S41°02'34"W	9.01	C2	75.00	47°04'52"	61.63
L3	S09°46'23"W	37.19	C3	175.00	311°8'11"	95.51
L4	N76°40'40"E	39.72	C4	29.00	113°05'43"	57.24
L5	S13°21'34"E	67.56	C5	65.00	89°57'46"	102.06
L6	N65°32'36"E	21.77	C6	25.00	101°05'50"	44.11
L7	S64°18'57"E	57.98	C7	25.00	50°08'26"	21.88
L8	S05°44'06"W	85.11	C8	65.00	70°03'03"	79.47
L9	S36°04'20"E	79.40	C9	25.00	41°48'25"	18.24
L10	S42°17'21"E	11.21	C10	30.00	60°37'55"	31.75
L11	N75°15'10"E	10.03	C11	30.00	66°50'56"	35.00
L12	N47°15'45"E	20.32	C12	60.00	62°27'29"	65.41
L13	N86°07'15"E	37.83	C13	150.00	27°59'25"	73.28
L14	S79°59'10"E	128.26	C14	30.00	38°51'30"	20.35
L15	S76°55'12"E	108.40	C15	32.00	46°11'22"	26.80
L16	S69°15'05"W	40.02	C16	414.28	35°33'31"	257.11
L17	S54°03'08"W	30.51	C17	78.00	21°27'58"	29.22
L18	N19°55'07"W	53.92	C18	75.00	22°50'33"	29.90
L19	N12°13'08"E	61.19	C19	16.00	99°09'16"	27.69
L20	N74°10'02"E	40.11	C20	1000.00	3°03'58"	53.51
L21	N15°00'42"E	18.34	C21	75.00	15°11'57"	19.90
L22	N67°31'26"W	18.21	C22	80.00	56°51'06"	79.38
L23	N40°04'33"E	22.18	C23	15.00	77°11'12"	20.21
L24	N63°39'25"W	40.64	C24	2.50	102°12'49"	4.46
L25	N52°48'17"E	7.96	C25	617.07	9°20'05"	100.53
L26	S78°27'09"E	21.60	C26	449.40	10°46'56"	84.57
L27	S75°55'14"E	2.98	C27	2.50	60°44'29"	2.65
L28	S08°59'43"E	93.98	C28	2.50	61°56'55"	2.70
L29	S31°54'46"E	45.60	C29	2.50	59°09'20"	2.58
L30	S47°06'00"E	16.08	C30	2.50	82°32'08"	3.60
L31	N76°10'55"W	7.45	C31	1.00	107°35'59"	1.88
L32	S87°09'51"E	89.69	C32	1.50	103°43'57"	2.72
L33			C33	1.20	116°27'42"	2.44
L34			C34	5.50	48°44'34"	4.68
L35			C35	350.00	2°31'55"	15.47
L36			C36	3.00	66°55'31"	3.50
L37			C37	100.00	2°55'16"	5.10
L38			C38	31.50	109°38'04"	60.27
L39			C39	44.04	167°30'28"	128.76
L40			C40	3.50	132°30'02"	8.09



- LEGEND:**
- CL = CENTER LINE
 - WSE = WATER AND SEWER EASEMENT
 - PBCO = PALM BEACH COUNTY
 - LAE = LIMITED ACCESS EASEMENT
 - LBE = LANDSCAPE BUFFER EASEMENT
 - LSE = LIFT STATION EASEMENT
 - (C) = CALCULATED
 - CMB = COMMISSIONERS' MINUTES BOOK
 - DE = DRAINAGE EASEMENT
 - DB = DEED BOOK
 - FND = FOUND
 - FPL = FLORIDA POWER & LIGHT
 - IP = IRON PIPE
 - IRC = IRON ROD WITH PLASTIC CAP
 - LB = LICENSED BUSINESS
 - LS = LICENSED SURVEYOR
 - (M) = MEASURED
 - MON = MONUMENT
 - ORB = OFFICIAL RECORD BOOK
 - (P) = PLAT
 - PB = PLAT BOOK
 - POB = POINT OF BEGINNING
 - POC = POINT OF COMMENCEMENT
 - PRM = PERMANENT REFERENCE MONUMENT
 - R/W = RIGHT-OF-WAY
 - RFB = ROAD PLAT BOOK
 - (S) = SURVEY
 - UE = UTILITY EASEMENT
 - WBE = WETLAND BUFFER EASEMENT
 - WME = WATER MANAGEMENT EASEMENT
 - PERM = PERMANENT CONTROL MARKERS
 - SET 4"x4" CONCRETE MONUMENT "LB7055"

Wantman Group, Inc.
 Engineering ♦ Surveying ♦ Mapping
 901 NORTHPOINT PARKWAY, SUITE 204
 WEST PALM BEACH, FL 33407
 (561) 687-2220 phone (561) 687-1110 fax
 CERT No. 6091 - LB No. 7055

CAD	K:\TOLLBROS\FRENCHMAN\DWG\218PLATCH		
REF	K:\TOLLBROS\FRENCHMAN\DWG\218MG01		
FLD	FB.	PG.	JOB 01-218CH
OFF	AJP/MRJ		DATE 01/03/02
CKD	RBP	SHEET 2 OF 2	DWG 218PLATCH